



**12. BIRDWATCHER STATUE**

Erected in 2005 by the Moore Art & Music Group with funds raised from the "Moore Music". Artist: Kath Wheatley

**13. GENERAL STORE**

With the formal laying out of the caravan park in 1960 a new shop site was proposed. Land was cleared and a 15-year lease was granted to Cobber and his Brother in law - Bob Brown. The town now had a 'hub'. This was the place to come for fishing info, materials, groceries and helpful advice. The old store was replaced in 1996.



**14. CARAVAN PARK**

This was first used as a campground with 4 small shacks and an old stone kitchen, originally built by the army as a wartime cookhouse. It then reverted to a camping/caravan park with Cobber Murray as Manager. In 1961 the Shire of Gingin built a new Caravan Park with Bob Black as manager. Over the years, the Shire has continued upgrading the Park but it has still managed to retain its original relaxing and family atmosphere.



[www.guildertonwa.com.au](http://www.guildertonwa.com.au)

**USEFUL NUMBERS**

AMBULANCE	000
JOONDALUP HOSPITAL	9400 9400
LANCELIN POLICE	9650 1100
GINGIN SHIRE OFFICE (including Ranger)	9575 2211
Ranger after hours	9575 5140
MOORE RIVER ROADHOUSE - Post Office, fuel, bottle shop, groceries, takeaway food , ice & gas	9577 1023
GUILDERTON GENERAL STORE - Cafe, ATM, takeaway food, groceries, ice & gas	9577 1040
GUILDERTON COUNTRY CLUB - Bar and restaurant, Visitors are welcome.	9577 1013
GUILDERTON CARAVAN PARK - Chalets, powered or unpowered sites	9577 1021

**THINGS TO DO**

Moore River Cruises - Phil Cook 0439 093 766 or 9577 1600  
 Explorer Boat Hire - on foreshore 0428 969 082  
 Playgrounds on foreshore, at Wedge St and in Gabbadah Park  
 Skate park, tennis, mini golf at Wedge St.  
 Golf, bowls, footgolf and tennis courts operate on honour boxes  
 Golf club hire available at Roadhouse  
 Walking trails - see map

**FOR ACCOMMODATION & ATTRACTIONS**

in Guilderton and nearby visit [www.guildertonwa.com.au](http://www.guildertonwa.com.au)

**TAKE CARE, AS THERE ARE NO EMERGENCY SERVICES IN TOWN**

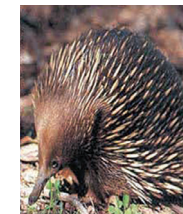
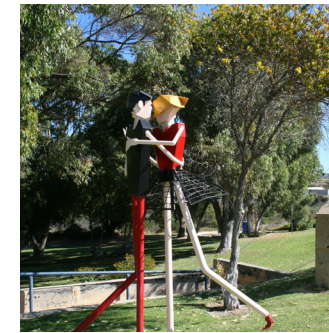
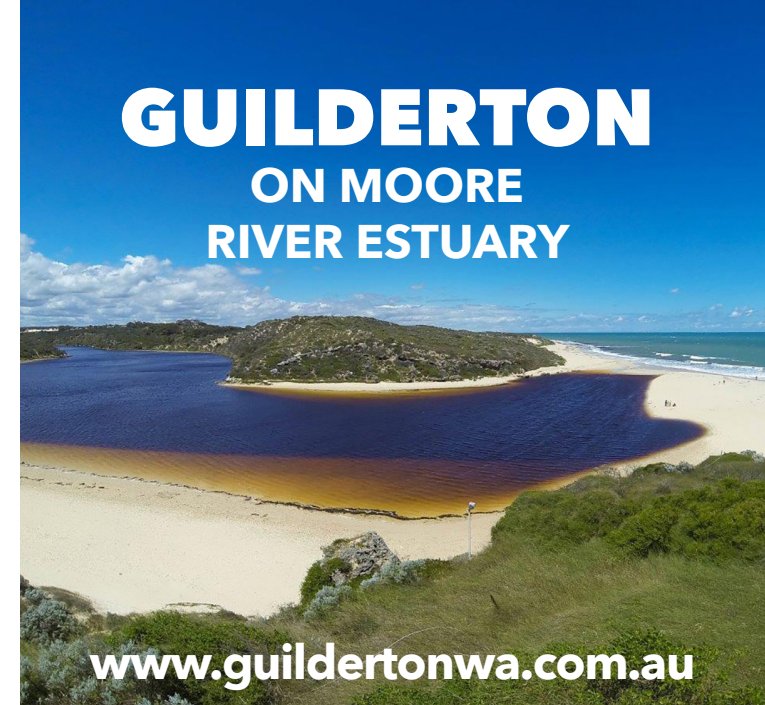
**CLEAN BEACHES AWARD 2015 Winner**

Guilderton was awarded this Keep Australia Beautiful Award and the Award for Environmental Education over Bondi Beach and Burleigh.

Judges commented "The most exceptional element of environmental education that occurs in Guilderton is embodied in the community's ongoing efforts to preserve the environmental values of the beach and estuary system. The condition of the dunes and beaches is testament to the community's appreciation of their unique environment and the importance of actively working to maintain it."



Please help us maintain this standard for future generations to enjoy.





# Welcome to Guilderton

**Please enjoy your stay in Guilderton**  
 -Take only photos and leave only footprints-



KEY	
	Car park
	Toilets
	Caravan Park
	Free BBQs
	Boat Ramp
	Information points
	Picnic areas
	Lighthouse
	Post Office
	Guilderton General Store & Café A Moore
	Guilderton Roadhouse
	Play area
	Walk trails
	Bird watching
	Scenic views
	Lookout
	Pedestrian Beach access point
	Fishing spots
	Canoe launch
	Swimming
	Skate Park
	Tennis
	Golf course
	Mini golf
	Dogs on lead
	Dogs allowed
	No dogs allowed
	No vehicles
	No digging out sandbar
	No camping
	Powerboats prohibited
	Stairs
	WARNING! Soft Sand
	Sealed road
	Unsealed road
	Walk trail



**5 knot speed limit**  
 along Moore River.  
**Jet skis prohibited**

4WD allowed north of North Groyne and lighthouse 4WD track only.  
 No vehicles allowed south of North Groyne for 4km.  
 No artificial breaking of sandbar.  
 No camping except in caravan park.

**Dogs not allowed on estuary foreshore and sandbar.**  
**Dog exercise areas on beach north of Hanson St and in Silver Creek picnic area.**  
**Dogs on lead allowed elsewhere.**

**Guilderton Visitor Centre - Near Caravan Park Driveway [www.guildertonwa.com.au](http://www.guildertonwa.com.au)**

This 2015 signage project was delivered by Moore Catchment Council in consultation with these partners and funded by Northern Agricultural Catchments Council through the Federal Government's National Landcare Programme.





# GUILDERTON - WHERE THE RIVER MEETS THE SEA

## PLACES OF INTEREST

About 1905 a 100 acre block owned by Henry Brockman was made a reserve for picnicking and camping. A well and three cottages were built in 1907 and people were charged one shilling per week for the use of these cottages. The town of Guilderton was gazetted in November 1951 and named after the 'guilders' from the Dutch sailing ship "Vergulde Draek" which wrecked north of Seabird in 1656.

### 1. FLOATING JETTY AND BOAT RAMP

The original boat ramp at Bream Point was approved by Harbours & Rivers in 1964 but not acted upon until 1970. The recent upgrade doubled the ramp size and saw the construction of the floating jetty in 2015 followed by the finger jetty in 2016.

### 2. WINDSWEPT TREES

Strong sea breezes in Guilderton contribute to the leaning of the native melaleucas and peppermint trees on the river frontage.



### 3. PELICANS STATUE ON RIVERFRONT

Erected in 2007 with funds from Moore Music events organised by the Moore River Arts Group.  
Artist: Justin Clapin.

### 4. COBBER MURRAY STAIRCASE

Cobber Murray was the first caretaker of the caravan park after proclamation of the town site in 1951. Cobber and Jean erected and ran a lean-to kiosk named Cobbers Cash Kiosk located close to these stairs until 1961 when the 'new shop' was built. During his time as caretaker, Cobber was also the unofficial events/social co-ordinator for summer activities in the Guilderton area. The stairway was added in 2015, with funding from the Gingin Shire and the Bendigo Bank.

### 5. LIMESTONE ROCKS, BOARDWALK, BASKETBALL HALFCOURT

The limestone rocks along the boardwalk are Tamala Limestone, which occurs on the WA coastline between Shark Bay and Albany. It consists of wind-blown shell fragments and quartz sand that has been cemented together by water and lime over great periods of time. The boardwalk was built in 2001 but was closed in late 2010 when it was damaged by a rock fall. It was re-opened in 2013. The Basketball Halfcourt was built in 2001.

### 6. SANDBAR OPENING

The sandbar opens several times a year, mainly in winter and spring due to heavy rains and the numerous springs that feed the river (several of these are located in Silver Creek). In summer, when flow reduces, the ocean waves build the sand bar up, damming the estuary and turning it into a long freshwater 'lake'. The Moore River Estuary is one of the most pristine yet fragile ecological systems in the South West of WA. Manually breaking open the sandbar is prohibited because it endangers riverine vegetation and also the birds, fish and reptile life.

### 7. THE MOORE RIVER

The river begins its journey in the Perenjori, Carnamah and Dalwallinu Shires. It flows south to Moora then west to Mogumber and the Dandaragan Scarp and finally enters the Indian Ocean at Guilderton. The river catchment has a total area of 13,800 square kilometres and is 193 kms in length. The Aboriginal people referred to the lower part of the river as Garban. It was renamed River Moore in May 1836 by Corporal Patrick Heffron of the 63rd Regiment of Foot, after his expedition leader George Fletcher Moore, Advocate-General

### 8. YOODOOK KARLA KADA STAIRCASE, SHIPWRECK PLAQUE AND LOOKOUT

The lookout was constructed in 2002 by the Gingin Shire and the stairway was added in 2015. The shipwreck plaque shows 4 of the wrecks along our coastline. More details on these wrecks and the lighthouse are available from the Guilderton Visitor Centre in another brochure.



### 9. DANCERS STATUE AND GABBADAH PARK

Gabbadah Park was the vision of a small group of community members over a 3-4 year period. Cleanup and landscaping was done by volunteer labour with the Shire contributing towards capital works. It was opened on January 31, 1993. The Dancers Statue was erected in 2005 by the Moore Art & Music Group. Artist: Kath Wheatley

### 10. MOSAIC WATER FOUNTAIN

This project was undertaken in 2004 by the Moore Art & Music Group with funds from their annual event "Moore Music".  
Artist: Brenda Diepevane

### 11. COBBER'S COTTAGE

AJ Murray (Cobber) was one of the original residents of Guilderton and was involved in the establishment of the town and its facilities. This block sold in the first release of land in 1956. A condition of purchase was that it had to be built on within 2 years.

